

RE·BAR·TIER™

MAX

RE-CHARGEABLE BATTERY OPERATED

RB650A

Speedy & Powerful!



CE

Speedy & Powerful!

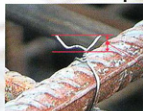
Increase Job Productivity

Applicable
bar sizes

20mm
to
65mm

Rubber
magazine
protector

Tied shape



Less than
30mm

Rubber body
protector

Torque dial
adjust
tightness

Cooling fan

Tough
high-impact
plastic body

Trigger lock

9.6V, 3.3Ah Ni-MH
Re-chargeable
battery

OUTSTANDING FEATURES

- Ties 20mm to 65mm re-bars with 1.5mm thick wire. Covers more applications in construction and public works.
- High-Speed Tying saves time and money. Within 1.1 seconds per tie.
- One Hand Operation gives free hand to set re-bars in position. Reduces set up time.
- Just pull the Trigger. Simple operation reduces training expense.

STANDARD EQUIPMENT

- 2 Batteries
- Battery charger
- Case
- Holster



APPLICATIONS



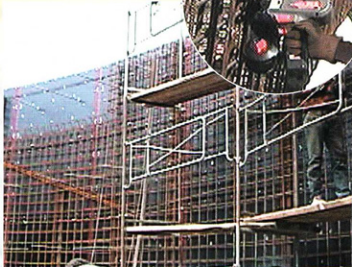
Bridge



Precast Factory



Road



Building Site

TIE WIRES ϕ 1.5mm Wire • 50 Coils/box (PAT.P)

TW1525:
Regular Steel
wire



TW1525-EG:
Electro Galvanized
wire



TW1525-PC:
Polyester-Coated
wire



- Be sure to use only the specified Tie Wire MAX TW1525

ACCESSORIES



Warm up cover for battery



Holster



Extension bar

SPECIFICATIONS

MODEL	RB650A
WEIGHT	3.3kg (7.2 lbs.)
DIMENSIONS	350(H)×100(W)×370(L)mm 13-1/8"×4"×14-1/2"
TYING SPEED	Less than 1.1 second/tie
WRAPS PER TIE	1 wrap/tie
TIES PER COIL	Approx. 230 - 120 ties/coil
TIES PER CHARGE	Approx. 2 - 3 coils/charge

NOISE
A-weighted single-event sound power level LWA, 1s, d 88.7dB
A-weighted single-event emission sound pressure level at work station LpA, 1s, d 79.4dB These values are determined and documented in accordance to CEN/TC 255 WG 1N45.3E (EN-standard in preparation)

VIBRATION
Vibration characteristic value = 114m/s²
These values are determined and documented in accordance to ISO 8532-11.

BATTERY	JP509H (Ni-MH Battery)
WEIGHT	656g (1.4 lbs.)
VOLTAGE	DC9.6V, 3.3Ah
RECHARGE TIME	Approx. 30 minutes

APPLICABLE RE-BAR SIZE

ϕ 20mm ~ ϕ 65mm (Total bar combination)

	Minimum combination	Maximum combination
RECOMMENDED BAR COMBINATIONS	ϕ 10mm × ϕ 10mm (#3×#3)	ϕ 36mm × ϕ 16mm × ϕ 13mm (#11×#5×#4) ϕ 25mm × ϕ 25mm × ϕ 13mm (#8×#8×#4) ϕ 22mm × ϕ 22mm × ϕ 19mm (#7×#7×#6) ϕ 29mm × ϕ 29mm (#9×#9)

RE-BAR-TIER™ RE-CHARGEABLE BATTERY OPERATED

SAVE TIME SAVE MONEY INCREASE JOB PRODUCTIVITY

FEATURES

- Quick tying ability, each tie takes less than one-second.
- One hand operation, speeds setup time.
- Light weight & compact body, weight only 2.1kg (4.6 lbs.)
- Powered by 9.6V re-chargeable battery (25minutes recharge)
- Learn to operate in just minutes.
- RB392: Ties from $\varnothing 10\text{mm} \times \varnothing 10\text{mm}$ (#3 \times #3) to $\varnothing 16\text{mm} \times \varnothing 19\text{mm}$ (#5 \times #6) re-bar
- RB213: mesh \times mesh to $\varnothing 10\text{mm} \times \varnothing 10\text{mm}$ (#3 \times #3)

RB392



20 to 39mm

APPLICABLE BAR SIZES:
Ties from $\varnothing 10\text{mm} \times \varnothing 10\text{mm}$ (#3 \times #3) to
 $\varnothing 16\text{mm} \times \varnothing 19\text{mm}$ (#5 \times #6) re-bar
Equipped with a
TORQUE ADJUSTMENT DIAL

RB213



9 to 21mm

APPLICABLE BAR SIZES:
mesh \times mesh to $\varnothing 10\text{mm} \times \varnothing 10\text{mm}$ (#3 \times #3)
Equipped with a
WIRE SAVINGS ADJUSTMENT DIAL

SPECIFICATIONS

MODEL	RB392
WEIGHT	2.1kg (4.6 lbs.)
DIMENSIONS	276(H) \times 99(W) \times 284(L)mm 10 7/8" \times 3 7/8" \times 11 1/8"
TYING SPEED	Less than 1.0second/tie
WRAPS PER TIE	3 wraps/tie
TIES PER COIL	Approx. 120 ties/coil
TIES PER CHARGE	Approx. 3 coils/charge
TIES PER SIZE	Ties from $\varnothing 10\text{mm} \times \varnothing 10\text{mm}$ (#3 \times #3) to $\varnothing 16\text{mm} \times \varnothing 19\text{mm}$ (#5 \times #6) re-bar
JP409 (NI-CD BATTERY)	DC9.6V, 2.0Ah
RECHARGE TIME	Approx. 25minutes

NOISE	A-weighted single-event sound power level LWA1s, d 92.5 dB A-weighted single-event emission sound pressure level at work station LpA,1s, d 88.5 dB These values are determined and documented in accordance to CEN/TC 255 WG 1 N45.3E. (EN-standard in preparation)
VIBRATION	Vibration characteristic value=0.97m/s ² These values are determined and documented in accordance to ISO 8662-11.

MODEL	RB213
WEIGHT	2.1kg (4.6 lbs.)
DIMENSIONS	276(H) \times 99(W) \times 200(L)mm 10 7/8" \times 3 7/8" \times 7 7/8"
TYING SPEED	Less than 0.8 second/tie
WRAPS PER TIE	3 wraps/tie
TIES PER COIL	Approx. 180 to 210 ties/coil
TIES PER CHARGE	Approx. 3 coils/charge
TIES PER SIZE	mesh \times mesh to $\varnothing 10\text{mm} \times \varnothing 10\text{mm}$ (#3 \times #3)
JP409 (NI-CD BATTERY)	DC9.6V, 2.0Ah
RECHARGE TIME	Approx. 25minutes

NOISE	A-weighted single-event sound power level LWA1s, d 91.3 dB A-weighted single-event emission sound pressure level at work station LpA,1s, d 84.8 dB These values are determined and documented in accordance to CEN/TC 255 WG 1 N45.3E. (EN-standard in preparation)
VIBRATION	Vibration characteristic value=0.49m/s ² These values are determined and documented in accordance to ISO 8662-11.

Standard Equipment

RB392 / RB213

● 2 Batteries ● Case



TIE WIRES $\varnothing 0.8\text{mm}$ Wire \times 50 Coils/box



TW895: Regular Steel wire



TW895 EG: Electro Galvanized wire



TW895-S: Stainless Steel wire (SUS304)



TW895-PC: Polyester-coated wire

- Be sure to use only the specified Tie Wire MAX TW895

ACCESSORIES



Tool cover



Holster

The specifications and design of the products in this catalog will be subject to change without advance notice due to our continuous efforts to improve the quality of our products.

MAX

MAX CO., LTD.

6-6 NIHONBASHI HAKOZAKI-CHO, CHUO-KU, TOKYO, JAPAN
PHONE: 81-3-3689-8131 FAX: 81-3-3689-7104
Web: <http://www.max-td.co.jp/mt/>

Distributor:



Printed on Recycled Paper
PRINTED IN JAPAN
0875-0AN T0871